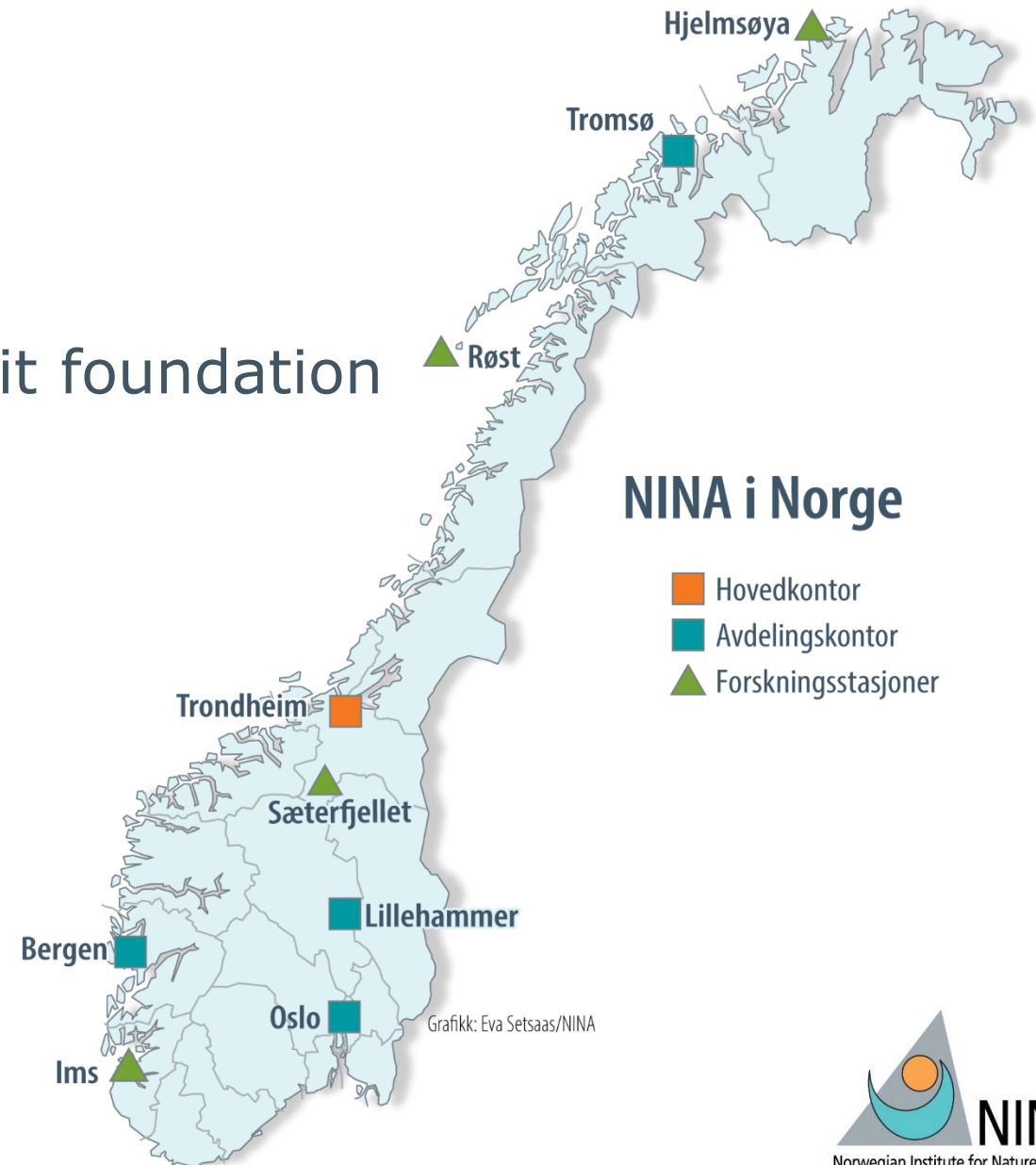


Norwegian Institute for Nature Research



This is NINA

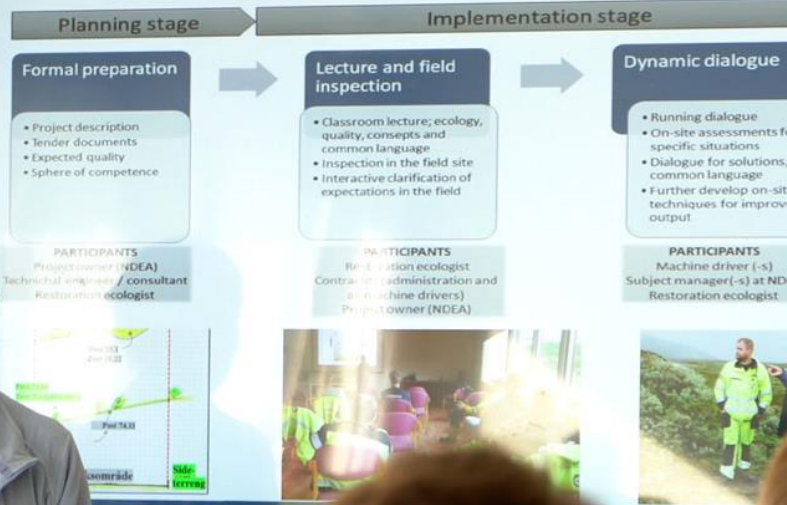
- Established in 1988
- Organization: Independent non-profit foundation
- Head office in Trondheim, Norway
- 335 employees
- 30 nationalities
- Female scientific staff: 41%
- 558,2 mill. NOK in total turnover (2023)



NINA's overarching goals

Contribute to sustainable societal development by providing research-based and current knowledge about biodiversity, climate, and society

«Green training»



We have reached a point when protecting nature is no longer sufficient.

We need to upscale ecosystem restoration and integrate restoration and mitigation in all types of activities and land-use management.

Dagmar Hagen, NINA



We have reached a point when protecting nature is no longer sufficient.

We need to upscale ecosystem restoration and integrate restoration and mitigation in all types of activities and land-use management.

Dagmar Hagen, NINA











From drained peats to vibrant beats



- Restoring degraded mires and peatlands in Romania
- Raising awareness for wetlands

NWPEAT - The Faculty of Geography at Babeş-Bolyai University

PEATRO 2 and **PEATRO 4** - Institute of Biology Bucharest of the Romanian Academy (IBB)



*Simply there's the bottom line:
Looking after peatlands properly is
much cheaper than any other
climate mitigation option.
Anything else is going to cost more.*

Duncan Halley, NINA







The children are the future!



This fieldtrip not only increased awareness of the importance of peatlands but was also a fun and engaging day.

Astrid Skrindo, NINA



Revitalizing Slovak Peatlands



- Ecohydrological restoration of 12 peatlands in Slovakia
- Calculating carbon stocks
- eDNA metabarcoding

DAPHNE Inštitút aplikovanej ekológie

Change language

en

Instructions

Volume calculation <

Peat properties <

Power setting

Results

Download results <

CarbonViewer

A calculator for peatland volume and carbon stock to support area planners and decision makers .

License [CC-BY-NC-SA 4.0](#) DOI [10.5281/zenodo.7540588](#)

NOTE: The application supports both the English and Norwegian language. To change the language, click on the [Change language](#) box and choose [en](#) for English or [no](#) for Norwegian.

MERK: Applikasjonen støtter både engelsk og norsk. For å endre språk, klikk på [Endre språk](#) -boksen og velg [en](#) for engelsk eller [no](#) for norsk.

Description of CarbonViewer in [English](#)

Beskrivelse av appen på [Norsk](#)



The amount of carbon stored at the project sites is equivalent to the annual emissions of 43.000 Slovaks.

Magni Olsen Kyrkjeide, NINA

MoseVis

Magni,
Researcher

Fia,
Researcher

Restoring wetlands - for climate, nature, and people



“

By early 21 st century standards, the Morava floodplain wetlands are a string of pearls.

But restored they could be a cascade of diamonds

Duncan Halley, NINA





Small ponds, big impacts

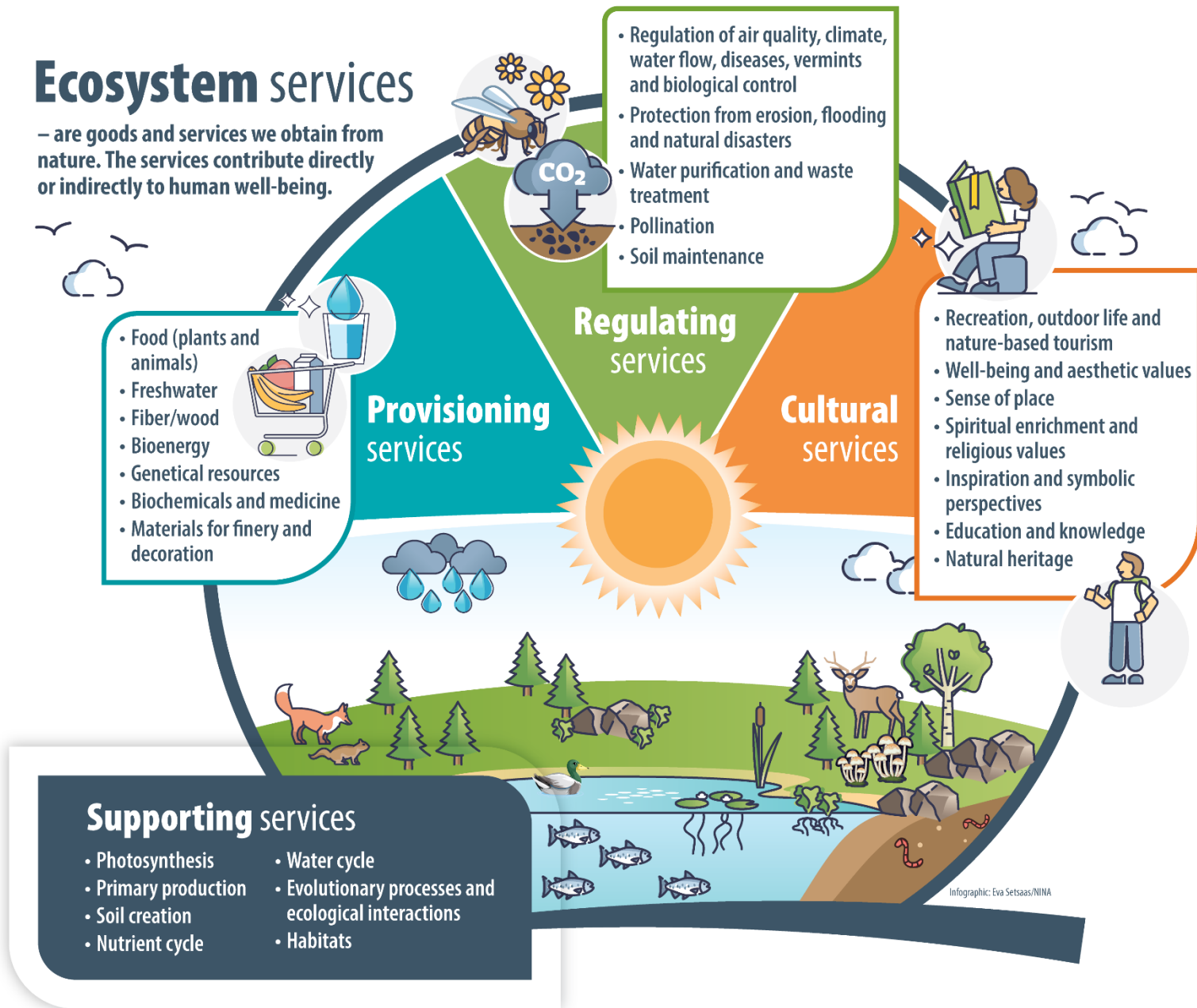


- Restoring ponds and grassland ecosystems
- Benefitting protected species and habitats – and people
- Calculating value of ecosystem services

ReNature - Škocjan Caves Public Service Agency

Ecosystem services

– are goods and services we obtain from nature. The services contribute directly or indirectly to human well-being.





“

We estimated the annual value of water usage in four villages in Slovenia.

Even with conservative figures the value of water exceeds 3.5 mill Euros.

Oddgeir Andersen, NINA





Floating artificial islands



To my mind, this has been an EXCELLENT collaboration.



We have done nice fieldwork, and the implementation of the islands was really a success.

Diego Pavón-Jordán, NINA



The ecology of ponds

- eDNA and eRNA from over 50 ponds
- Genetic diversity of two amphibian species

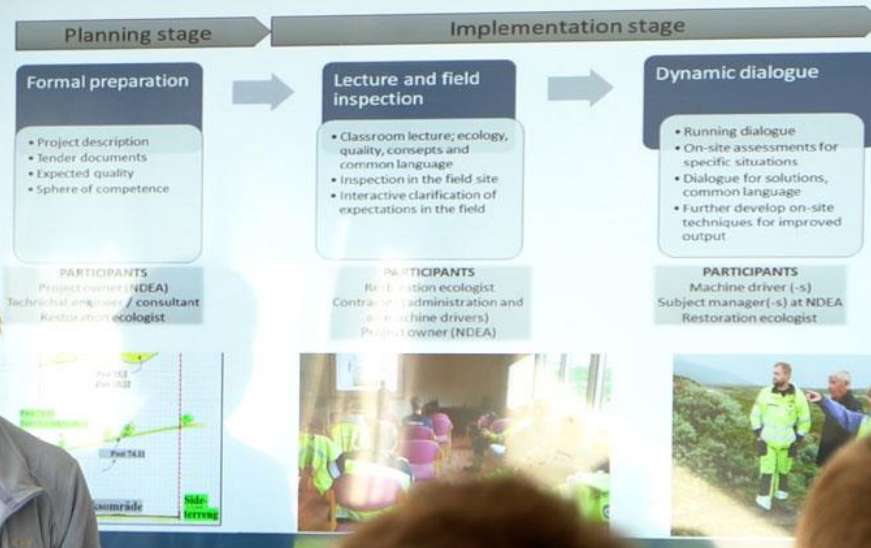
ECOPOND - Institute of Nature Conservation, Polish Academy of Sciences



Our results indicate the smooth newts and common toads populations in Oslo, Norway, are more isolated than similarly distributed populations of the two species in Poland.

Annette Taugbøl, NINA

«Green training»



Green training is a way to work



1 Planning

- Project description
- Tender documents
- Expectations
- Competence



2 Training

- Lecture (indoors)
- Inspection / walkthrough (outdoors)



3 Follow-up during the construction phase

- Ongoing contact
- Review of situations
- Finding solutions
- Further develop methods and improve results

Grafikk: Eva Settsaas/NINA





Want to know more?

Mail to: camilla.nass@nina.no



@NINAForskning (norsk)
@NINAnature (engelsk)



www.facebook.com/ninaforskning



@NINAForskning



Naturforskning



www.linkedin.com/company/nina