



# Pěstuj bezpečně - Nepodporuj invazní druhy

## Grow safely – do not support invasive species

Kateřina Berchová Bímová

[berchova@fzp.czu.cz](mailto:berchova@fzp.czu.cz)

Project leader: ČZU Prague

Partners: VÚKOZ Průhonice, SZUZ

Norway funds the project through the Norwegian Funds as part of the Rago call under the administration of the State Environmental Fund of the Czech Republic, project number 3211100006.

# Invasive species in the Czech Republic

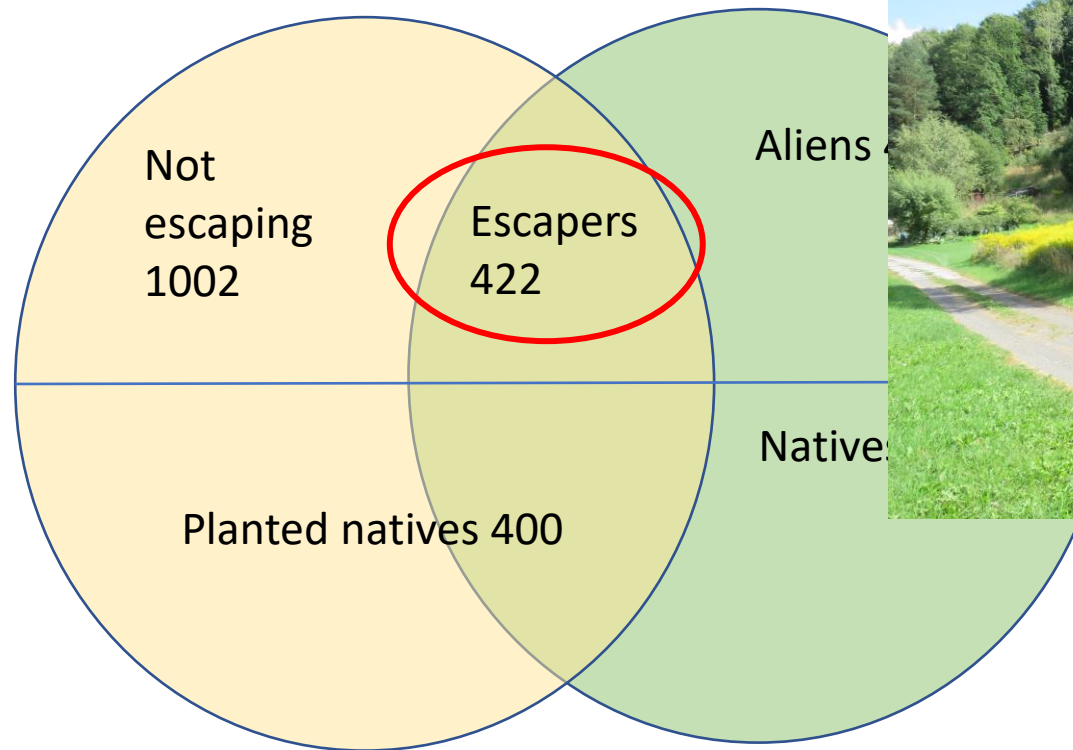
Catalogue of alien plants of the Czech Republic (Pyšek et al. 2022)

- 1576 non-native species (37.8 % of whole flora, 16 % naturalised and invasive)
- 385 archeophytes and 1191 neophytes
- 75 invasive plant species, 4 on the union list

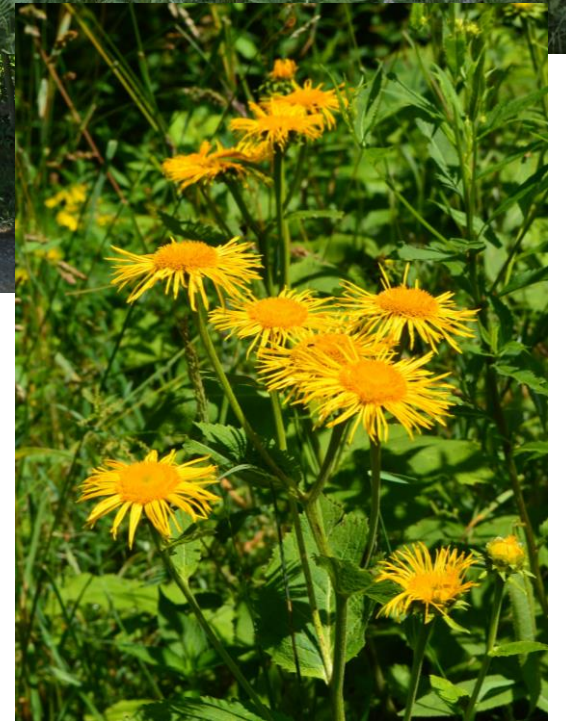


# Invasive species in the Czech Republic

## Gardens



> 52 % of escaped plant cases



... still promoted and distributed!



# Project motivation

- invasive species are planted and used for landscaping, despite being a major global threat to biodiversity
- low public awareness regarding invasive species in the Czech Republic
- gardeners in the CZ do not take the issue of invasive species seriously

# Project goals

- increase awareness regarding invasive species
- do not be restrictive but offer a solution
- make examples of „good practice“



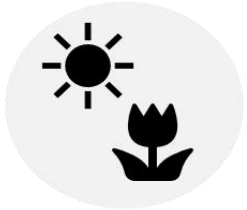
# Project goals

1. Based on our own research and experiences, make a list of “escapers” and “safe species”

Perennial flower beds in VÚKOZ Průhonice



# Results of the study (Kutlvař et al.)



Sunny beds

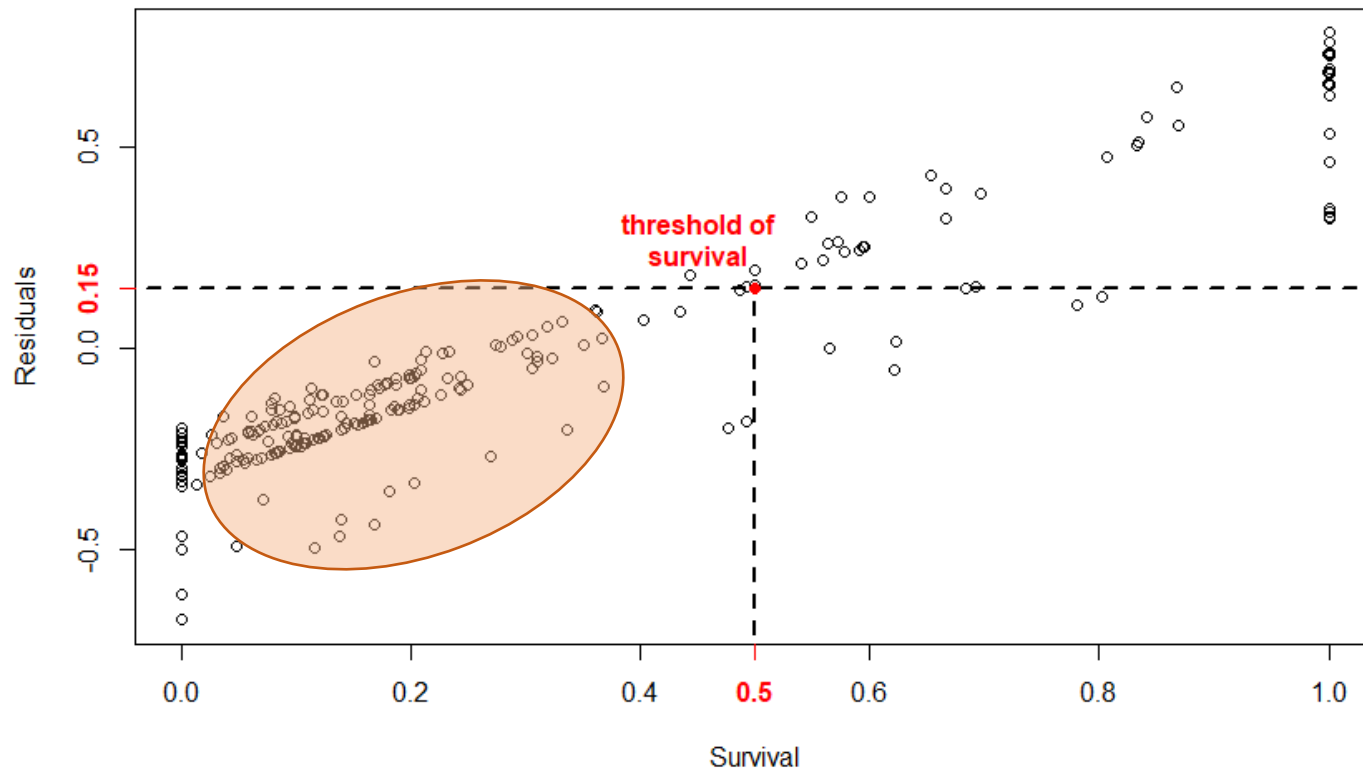


Shadow beds



# Results – sunny beds

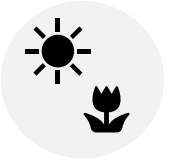
- Survival rate of species 67 %



## Established species

*Aquilegia* sp., *Artemisia ludoviciana*, *Aster dumosus*, *Centranthus ruber*, *Coreopsis palmata*, *C. verticillata*, *Echinacea purpurea*, *Geranium* × *cantabrigiense*, *G. sanguineum*, *Geum triflorum*, *Symphiotrichum novi-belgii*

Kutlvašr et al., 2018

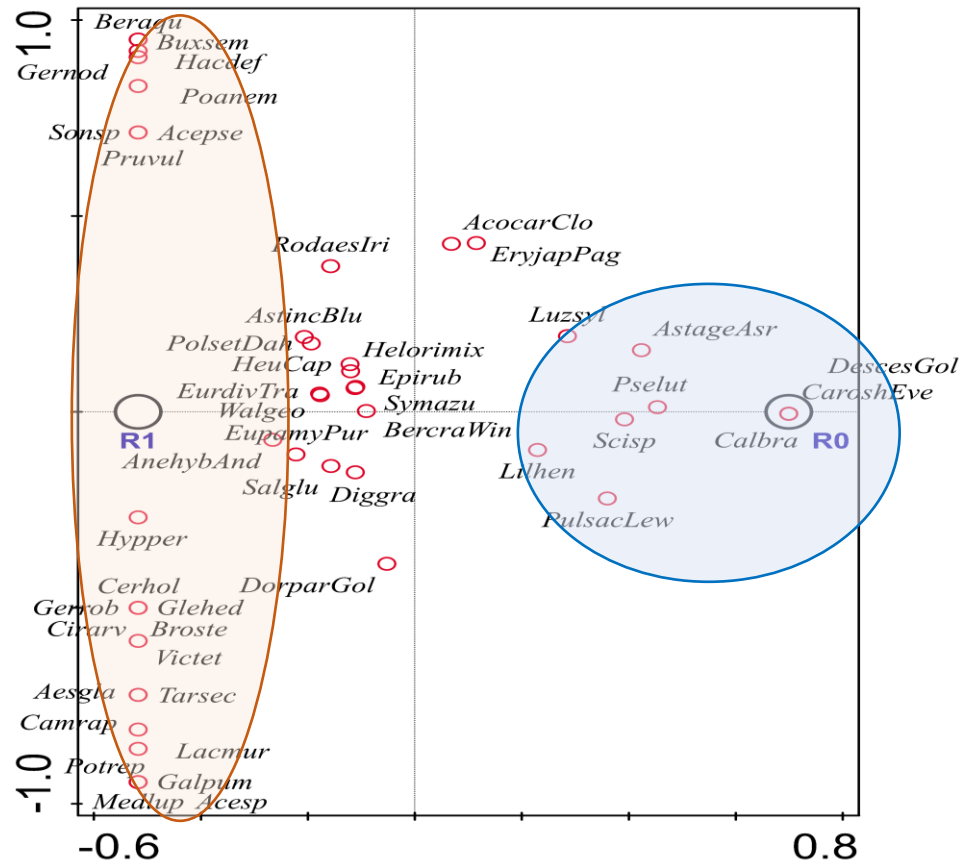




# Results – shadow beds



Survival rate of species 61 %



## Established species

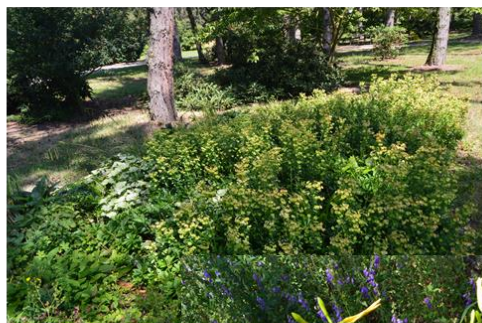
*Agrimonia eupatoria*, *Anemonoides sylvestris*, *Buglossoides purpureocoelurea*, *Brunella macrophylla*, *Carex pendula*, *Euphorbia amygdaloides*, *Eurybia macrophylla*, *Galium odoratum*, *Geranium ×cantabrigiense*, *Lathyrus aureus*, *Potentilla recta*, *Tantacetum corymbosum*, *Vinca minor*, *Viola odorata*

Kutlvař et al., in prep



# Results

## Dominant species



*Euphorbia amygdaloides*  
subsp. *robbiae*



*Campanula rapunculoides*



*Eurybia macrophylla*



*Lychnis coronaria*



*Aster novi-belgii* agg.



*Centranthus ruber*

Kutlvař et al. 2018, unpublished





Reserved

# Problematic species

*Lupinus polyphyllus*  
*Solidago can. + gig.*  
*Aster novi-belgii* agg.  
*Lychnis coronaria*  
*Stachys byzantina*  
*Rudbeckia hirta*  
*Rudbeckia laciniata*  
*Aquilegia vulgaris*  
*Stipa tenuissima*  
*Centranthus ruber*  
*Lysichiton americanus*  
*Telekia speciosa*  
*Fallopia aubertii*  
*Lamium galeobdolon* subsp. *argentatum*  
*Parthenocissus quinquefolia* s. l.  
*Helianthus tuberosus*  
*Vinca minor*  
*Anaphalis margaritacea*

# Safe alternatives

*Baptisia*  
***Solidago caesia***, *S. virgauea*  
*Kalimeris incisa*, *Aster* × *frikartii*, ***A. amellus*** 'Rudolf Goethe'  
*Salvia argentea*, *Dianthus gratianopolitanus*, ***D. carthusianorum***  
*Artemisia stelleriana*, *Salvia argentea*  
***Coreopsis palmata***, *Rudbeckia fulgida*  
*Rudbeckia occidentalis*  
pure species  
***Penstemon barbatus*** 'Coccineus'  
native species of **Stippa** - ***S. pennata***, *S. joanis*  
*Lychnis chalcedonica*  
*Arum italicum*, other *Arum* sp.  
*Inula helenium*  
*Clematis vitalba*, and cultivars  
*Lysimachia nummularia*, *Pullmonaria*?  
*Parthenocissus tricuspidata*  
*Rudbeckia fulgida*, *Rudbeckia occidentalis*  
?  
***Anaphalis triplinervis***, *Helichrysum italicum*, *Artemisia*



# Project goals

2. Increase awareness regarding invasive species - seminars, exhibition, lectures, „Students to Students“ campaign



# Project goals

## 3. Examples of „good practice“



- 15 flower beds with „safe species“
- Two types of plant composition – city and village
- Information tables about the plant composition
- Planted 2022, 2023 – autumn, 2024 - spring



# Flower beds building



# Thank you for your attention

<https://ragopestuj.fzp.czu.cz>



SVAZ  
ZAKLÁDÁNÍ  
A ÚDRŽBY ZELENĚ

